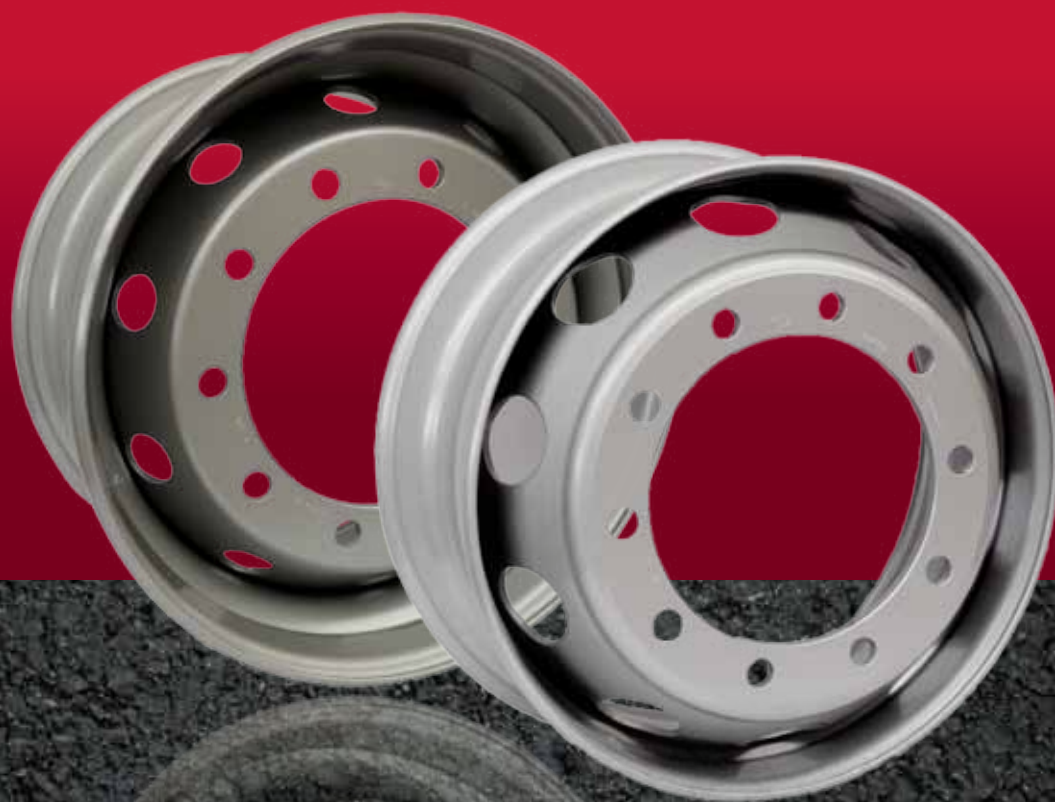


# Gianetti Ruote Quick Reference Catalog 2016

Supplying Europe's Leading Commercial  
Vehicle Manufacturers



One of Europe's longest-standing, leading producers of commercial steel wheels, Gianetti Ruote S.r.l. originated in 1880 as a manufacturer of wheels for agricultural equipment. In the 1920s, it began producing wheels for automobiles and commercial trucks in addition to its agricultural offerings. The company initiated a globalization strategy in the 1930s, obtaining the license to produce steel truck rims from Firestone Steel Products, and cast-steel spoke wheels from Dayton Steel Foundry, both of the United States. Today, Gianetti is a part of Accuride Corporation and supplies Europe's leading manufacturers of commercial vehicle equipment – including trucks, buses and trailers – with steel wheels ranging from 16" to 24" in diameter.

The wheel is a critical safety component of the vehicle, subject to demanding and complex forces. Gianetti Ruote's design and testing of truck wheels utilizes sophisticated procedures heavily dependent on computer technology, including Finite Element Analysis, Metal Forming, and CAD systems. The company rigorously tests its wheels using a "Bi-axial Test Machine", capable of simulating the potential impact to the wheels that occur under typical road conditions.

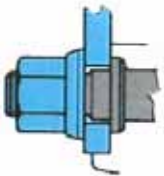
Low environmental impact materials, advanced production lines, up-to-date process technologies and in-line quality controls enable Gianetti Ruote to produce wheels with optimal geometry, quality and reliability, with the lowest product weight in the industry.

In January 1996, Gianetti instituted a Quality Management System according to ISO/TS 16949:2016 standards. With a culture of continuous improvement, Gianetti Ruote is making new investments in manufacturing and process technologies and application of Lean manufacturing systems. These changes will support Gianetti's plans to obtain environmental homologation per ISO 14001.

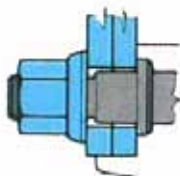


## Wheel to Hub Mounting Systems

Montaggio In Semplice  
Single Mounting



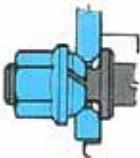
Montaggio In Accoppiato  
Dual Mounting



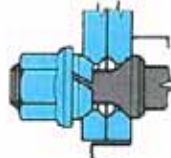
### Centering on the pilot hole (type «M» or «MZ» - cylindrical mounting holes)

This mounting system, now considered the standard, ensures a correct and precise positioning of the wheel using the limited clearance between the disc pilot hole and the corresponding diameter of the hub. Special flat nuts, with turning washers (shown on 7575 ISO norm), generate damping forces only on the axial direction. It is imperative to use the correct torque values.

Montaggio In Semplice  
Single Mounting



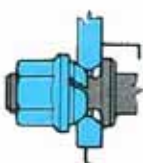
Montaggio In Accoppiato  
Dual Mounting



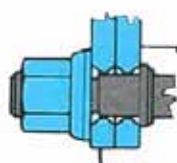
### Centering on spherical seats (so called «DIN» or «BZ» type - with spherical countersunk mounting holes)

The diameter of the disc pilot hole shows a wider clearance; hence, it has the sole function of preliminary centering. The exact positioning relies upon the inserting of spherical washers (or nuts) into the corresponding disc mounting hole seats. For dual mounting, a proper seat or washer on the stud acts as a guide for the internal wheel. The spherical seats carry the load in this mounting configuration.

Montaggio In Semplice  
Single Mounting



Montaggio In Accoppiato  
Dual Mounting



### Mixed centering («BMZ» type)

A wheel with flared disc seats and a precise pilot hole constitutes an acceptable compromise and a valid option to the previous solutions. An accurate disc pilot hole, well-centered on the hub, allows the wheel centering to occur through the spherical (or conical) seats. Similarly, the flat area around the countersunk seats allows regular tightening of the special nuts with inserted washers. If the clearance between studs and holes is wide, it is advisable to insert elastic spring washers on at least two facing studs stems, so as to prevent potential angular rotations.



### Ruote Con Cerchi Serie Canale 15°

Wheels with 15° Drop Center Rims  
17,5 x 6,00

Disegno Drawing	Valvola Esterna External Valve	Fori Holes	Foro Centr. Pilot Hole	Interasse Fori P.C.D.	Tipo Fori Hole Types	Centraggio Centering	Spost. Int. Inset ET	Spost. Est. Offset HMA	Peso Weight	Indice Di Carico Max Load Rating	Max Pressione ruota Wheel Pressure	Q.tà x pallet Pallet Quantity	Clienti Customers	Pneumatici Suggestiti Suggested Tires	
Ref. No	No	Ø mm.	Ø mm.	EUWA	Trad.	mm.	mm.	Kg.	Kg.	Bar	Unit				
15544	ALV	6	161	205	M18	Ø 21	MZ	120	131	21,5	1850	9	20	Iveco Nissan	8R17,5 8,5R17,5
16005	ALV	6	191	245	M20	Ø 23	MZ	120	131	21	1850	9	20	Iveco	9R17,5
15385	ALV	6	202	245	M18	Ø 21	MZ	120	131	20,8	1900	9	20	Man	9,5R17,5
15516	ALV	8	221	275	M20	Ø 24	MZ	124	134	20,5	1850	9	20	Iveco	205/65R17,5
15853	ALV	10	176	225	M20	Ø 24	MZ	123	134	21,9	2430	9	20	Trailer	205/75R17,5
15849	ALV	10	176	225	M22	Ø 26	MZ	123	134	21,9	2430	9	20	Trailer	215/75R17,5
15852	ALV	10	176	225	M22DS36	B33	BMZ	123	134	21,9	2430	9	20	Trailer	225/70R17,5 225/75R17,5

### Ruote Con Cerchi Serie Canale 15°

Wheels with 15° Drop Center Rims  
17,5 x 6,75

Disegno Drawing	Valvola Esterna External Valve	Fori Holes	Foro Centr. Pilot Hole	Interasse Fori P.C.D.	Tipo Fori Hole Types	Centraggio Centering	Spost. Int. Inset ET	Spost. Est. Offset HMA	Peso Weight	Indice Di Carico Max Load Rating	Max Pressione ruota Wheel Pressure	Q.tà x pallet Pallet Quantity	Clienti Customers	Pneumatici Suggestiti Suggested Tires	
Ref. No	No	Ø mm.	Ø mm.	EUWA	Trad.	mm.	mm.	Kg.	Kg.	Bar	Unit				
15391	ALV	6	202	245	M18	Ø 21	MZ	128	139	22,3	2120	9	20	Man	8,5R17,5
16016	ALV	6	202	245	M18	Ø 21	MZ	128	139	24	2360	9	20	Daimler	9,5R17,5 10R17,5
15836	ALV	6	202	245	M18DS32	B2	BMZ	128	139	24	2360	9	20	Daimler	205/65R17,5
15505	ALV	8	221	275	M20	Ø 24	MZ	132	142	21,5	2360	9	20	Iveco	205/75R17,5
15850	ALV	10	176	225	M20	Ø 24	MZ	129	140	22,9	2725	9	20	Trailer	215/75R17,5
15759	ALV	10	176	225	M22	Ø 26	MZ	129	140	22,9	2725	9	20	Trailer	225/75R17,5
15851	ALV	10	176	225	M22DS36	B33	BMZ	129	140	22,9	2725	9	20	Trailer	235/75R17,5 245/70R17,5 265/70R17,5

### Ruote Con Cerchi Serie Canale 15°

Wheels with 15° Drop Center Rims  
19,5 x 6,75

Disegno Drawing	Valvola Esterna External Valve	Fori Holes	Foro Centr. Pilot Hole	Interasse Fori P.C.D.	Tipo Fori Hole Types	Centraggio Centering	Spost. Int. Inset ET	Spost. Est. Offset HMA	Peso Weight	Indice Di Carico Max Load Rating	Max Pressione ruota Wheel Pressure	Q.tà x pallet Pallet Quantity	Clienti Customers	Pneumatici Suggestiti Suggested Tires	
Ref. No	No	Ø mm.	Ø mm.	EUWA	Trad.	mm.	mm.	Kg.	Kg.	Bar	Unit				
15370	ALV	8	221	275	M20	Ø 24	MZ	133	144	28	2500	8,5	16	Man Iveco	9,5R19,5
15909	ALV	8	221	275	M22DS36	B33	BMZ	133	144	28	2500	8,5	16	Trailer	245/70R19,5
15877	ALV	10	176	225	M20	Ø 24	MZ	130	141	27	2500	8,5	16	Trailer	265/70R19,5

Warning: The use of star shaped (or non-circular) hubs may reduce the useful life of the wheel. Star shaped (or non-circular) hubs could cause the wheel to experience reduced fatigue life, in some cases creating concentrated stress points leading to cracks and wheel failure compared to continuous radius hubs. EUWA strictly recommends for vehicles equipped with non-circular hubs, that the wheels be inspected and checked for cracks in the attachment face every 50.000km. Please contact a Gianetti Sales Representative for more information.

### Ruote Con Cerchi Serie Canale 15°

Wheels with 15° Drop Center Rims  
19,5 x 7,50

Disegno Drawing	Valvola Esterna External Valve	Fori Holes	Foro Centr. Pilot Hole	Interasse Fori P.C.D.	Tipo Fori Hole Types	Centraggio Centering	Spot. Int. Inset ET	Spot. Est. Offset HMA	Peso Weight	Indice Di Carico Max Load Rating	Max Pressione ruota Wheel Pressure	Q.tà x pallet Pallet Quantity	Clienti Customers	Pneumatici Utiliz. Mounting Tires	
Ref. No		No	Ø mm.	Ø mm.	EUWA	Trad.	mm.	mm.	Kg.	Kg.	Bar	Unit			
15371	ALV	8	221	275	M20	Ø 24	MZ	142	155	29	2900	9	12	Man Iveco	245/70R19,5 265/70R19,5 285/70R19,5
15910	ALV	8	221	275	M22DS36	B33	BMZ	142	155	29	2900	9	12	Trailer	
15854	ALV	10	176	225	M20	Ø 24	MZ	139	150	28,5	2725	9	12	Trailer	
15855	ALV	10	176	225	M22	Ø 26	MZ	139	150	28,5	2725	9	12	Trailer	
15753	ALV	10	176	225	M22DS36	B33	BMZ	139	150	28,5	2725	9	12	Trailer	

### Ruote Con Cerchi Serie Canale 15°

Wheels with 15° Drop Center Rims  
19,5 x 8,25

Disegno Drawing	Valvola Esterna External Valve	Fori Holes	Foro Centr. Pilot Hole	Interasse Fori P.C.D.	Tipo Fori Hole Types	Centraggio Centering	Spot. Int. Inset ET	Spot. Est. Offset HMA	Peso Weight	Indice Di Carico Max Load Rating	Max Pressione ruota Wheel Pressure	Q.tà x pallet Pallet Quantity	Clienti Customers	Pneumatici Suggeriti Suggested Tires	
Ref. No		No	Ø mm.	Ø mm.	EUWA	Trad.	mm.	mm.	Kg.	Kg.	Bar	Unit			
15372	ALV	8	221	275	M20	Ø 24	MZ	157	170	30	3150	9	12	Trailer Man	265/55R19,5 265/70R19,5 285/70R19,5
15488	ALV	8	221	275	M22DS36	B33	BMZ	154	167	29	3150	9	12	Daimler	

### Ruote Con Cerchi Serie Canale 15°

Wheels with 15° Drop Center Rims  
22,5 x 7,50

Disegno Drawing	Valvola Esterna External Valve	Fori Holes	Foro Centr. Pilot Hole	Interasse Fori P.C.D.	Tipo Fori Hole Types	Centraggio Centering	Spot. Int. Inset ET	Spot. Est. Offset HMA	Peso Weight	Indice Di Carico Max Load Rating	Max Pressione ruota Wheel Pressure	Q.tà x pallet Pallet Quantity	Clienti Customers	Pneumatici Suggeriti Suggested Tires	
Ref. No		No	Ø mm.	Ø mm.	EUWA	Trad.	mm.	mm.	Kg.	Kg.	Bar	Unit			
15982	ALV	8	221	275	M20	Ø 24	MZ	140	153	38	3150	9	12	Man	10R22,5 11R22,5 255/70R22,5 275/70R22,5
15536	ALV	8	221	275	M20	Ø 24	MZ	147	160	38	3150	9	12	Iveco	
16096	ALV	10	281	335	M22	Ø 26	MZ	148	160	35,5	3350	9	12	Iveco	
16187	ALV	10	281	335	M22DS36	B33	BMZ	148	160	35,5	3350	9	12	Truck	
16133	ALV	10	281	335	M22	Ø 26	MZ	152	165	36	3350	9	12	Iveco Truck	
16197	ALV	10	281	335	M22	Ø 26	MZ	152	165	39	3750	9	12	Truck	

### Ruote Con Cerchi Serie Canale 15°

Wheels with 15° Drop Center Rims  
22,5 x 8,25

Disegno Drawing	Valvola Esterna External Valve	Fori Holes	Foro Centr. Pilot Hole	Interasse Fori P.C.D.	Tipo Fori Hole Types	Centraggio Centering	Spot. Int. Inset ET	Spot. Est. Offset HMA	Peso Weight	Indice Di Carico Max Load Rating	Max Pressione ruota Wheel Pressure	Q.tà x pallet Pallet Quantity	Clienti Customers	Pneumatici Suggeriti Suggested Tires	
Ref. No		No	Ø mm.	Ø mm.	EUWA	Trad.	mm.	mm.	Kg.	Kg.	Bar	Unit			
15988	ALV	8	221	275	M20	Ø 24	MZ	122	135	38	3550	9	12	Man Man	11R22,5 12R22,5 265/70R22,5 275/70R22,5 275/80R22,5 275/90R22,5 285/60R22,5 295/60R22,5 295/80R22,5 305/70R22,5
16094	ALV	10	281	335	M22	Ø 26	MZ	151	165	37	3750	9	12	Daimler Iveco	
16135	ALV	10	281	335	M22DS36	B33	BMZ	151	165	37	3750	9	12	Trailer	
16118	ALV	10	281	335	M22	Ø 26	MZ	156	170	37,5	3750	9	12	Truck	
16188	ALV	10	281	335	M22DS36	B33	BMZ	156	170	37,5	3750	9	12	Truck	

### Ruote Con Cerchi Serie Canale 15°

Wheels with 15° Drop Center Rims  
22,5 x 9,00

Disegno Drawing	Valvola Esterna External Valve	Fori Holes	Foro Centr. Pilot Hole	Interasse Fori P.C.D.	Tipo Fori Hole Types	Centraggio Centering	Spost. Int. Inset ET	Spost. Est. Offset HMA	Peso Weight	Indice Di Carico Max Load Rating	Max Pressione ruota Wheel Pressure	Q.tà x pallet Pallet Quantity	Clienti Customers	Pneumatici Suggestiti Suggested Tires	
Ref. No		No	Ø mm.	Ø mm.	EUWA	Trad.	mm.	mm.	Kg.	Kg.	Bar	Unit			
16088	ALV	10	281	335	M22	Ø 26	MZ	161	175	37,8	4000	8,5	12	Man Iveco Daimler Trailer Volvo	12R22,5 285/60R22,5 295/60R22,5 295/80R22,5 305/60R22,5 305/70R22,5 315/60R22,5 315/70R22,5 315/75R22,5 315/80R22,5
16186	ALV	10	281	335	M22DS36	B33	BMZ	161	175	37,8	4000	8,5	12	Trailer	

### Ruote Con Cerchi Serie Canale 15°

Wheels with 15° Drop Center Rims  
22,5 X 11,75

Disegno Drawing	Valvola Esterna External Valve	Fori Holes	Foro Centr. Pilot Hole	Interasse Fori P.C.D.	Tipo Fori Hole Types	Centraggio Centering	Spost. Int. Inset ET	Spost. Est. Offset HMA	Peso Weight	Indice Di Carico Max Load Rating	Max Pressione ruota Wheel Pressure	Q.tà x pallet Pallet Quantity	Clienti Customers	Pneumatici Suggestiti Suggested Tires	
Ref. No		No	Ø mm.	Ø mm.	EUWA	Trad.	mm.	mm.	Kg.	Kg.	Bar	Unit			
15794	ALV	10	281	335	M22	Ø 26	MZ	0	/	38,5	4500	9	12	Trailer	365/70R22,5 385/65R22,5
15925	ALV	10	281	335	M22DS36	B33	BMZ	0	/	38,5	4500	9	12	Trailer	
16103	ALV	10	281	335	M22	Ø 26	MZ	120	/	42	5000	9	12	Man Daimler Iveco Trailer	
16104	ALV	10	281	335	M22	Ø 26	MZ	130	/	42	5000	9	12	Iveco Trailer	
16099	ALV	10	281	335	M22	Ø 26	MZ	135	/	42	5000	9	12	Truck/ Trailer	

### Ruote Con Cerchi Serie Canale 15°

Wheels with 15° Drop Center Rims  
22,5 x 13,00

Disegno Drawing	Valvola Esterna External Valve	Fori Holes	Foro Centr. Pilot Hole	Interasse Fori P.C.D.	Tipo Fori Hole Types	Centraggio Centering	Spost. Int. Inset ET	Spost. Est. Offset HMA	Peso Weight	Indice Di Carico Max Load Rating	Max Pressione ruota Wheel Pressure	Q.tà x pallet Pallet Quantity	Clienti Customers	Pneumatici Suggestiti Suggested Tires	
Ref. No		No	Ø mm.	Ø mm.	EUWA	Trad.	mm.	mm.	Kg.	Kg.	Bar	Unit			
12532		10	281	335	M22	Ø 26	MZ	0	/	55	5150	8,5	8/12	Trailer	415/45R22,5
12358		10	281	335	M22DS36	B33	BMZ	0	/	55	5150	8,5	8/12	Trailer	425/65R22,5

### Ruote Con Cerchi Serie Canale 15°

Wheels with 15° Drop Center Rims  
19,5 x 14,00

Disegno Drawing	Valvola Esterna External Valve	Fori Holes	Foro Centr. Pilot Hole	Interasse Fori P.C.D.	Tipo Fori Hole Types	Centraggio Centering	Spost. Int. Inset ET	Spost. Est. Offset HMA	Peso Weight	Indice Di Carico Max Load Rating	Max Pressione ruota Wheel Pressure	Q.tà x pallet Pallet Quantity	Clienti Customers	Pneumatici Suggestiti Suggested Tires	
Ref. No		No	Ø mm.	Ø mm.	EUWA	Trad.	mm.	mm.	Kg.	Kg.	Bar	Unit			
15457		8	221	275	M22	Ø 26	MZ	0	/	39	4500	9	8	Trailer	425/55R19,5
15574		8	221	275	M22	Ø 26	MZ	120	/	40,5	4500	9	8	Trailer	435/50R19,5
15600		10	281	335	M22	Ø 26	MZ	0	/	39	4500	9	8	Trailer	445/45R19,5
15724		10	281	335	M22	Ø 26	MZ	120	/	39	4500	9	8	Trailer	445/65R19,5

### Ruote Con Cerchi Serie Canale 15°

Wheels with 15° Drop Center Rims  
22,5 x 14,00

Disegno Drawing	Valvola Esterna External Valve	Fori Holes	Foro Centr. Pilot Hole	Interasse Fori P.C.D.	Tipo Fori Hole Types	Centraggio Centering	Spont. Int. Inset ET	Spont. Est. Offset HMA	Peso Weight	Indice Di Carico Max Load Rating	Max Pressione ruota Wheel Pressure	Q.tà x pallet Pallet Quantity	Cilenti Customers	Pneumatici Suggestiti Suggested Tires	
Ref. No	No	Ø mm.	Ø mm.	EUWA	Trad.	mm.	mm.	Kg.	Kg.	Bar	Unit				
12533		10	281	335	M22	Ø 26	MZ	0	/	60	5600	9	8	Trailer	435/45R22,5
12394		10	281	335	M22DS36	B33	BMZ	0	/	60	5600	9	8	Trailer	445/55R22,5
15549		10	281	335	M22	Ø 26	MZ	4	/	60	4750	9	8	Bus	445/65R22,5
15524		10	281	335	M22	Ø 26	MZ	155	/	60	6000	9	8	Trailer	445/75R22,5
															455/55R22,5

### Ruote Con Cerchi Serie Canale 5°

Wheels with 5° Drop Center Rims  
24 x 8,5

Disegno Drawing	Valvola Esterna External Valve	Fori Holes	Foro Centr. Pilot Hole	Interasse Fori P.C.D.	Tipo Fori Hole Types	Centraggio Centering	Spont. Int. Inset ET	Spont. Est. Offset HMA	Peso Weight	Indice Di Carico Max Load Rating	Max Pressione ruota Wheel Pressure	Q.tà x pallet Pallet Quantity	Cilenti Customers	Pneumatici Suggestiti Suggested Tires	
Ref. No	No	Ø mm.	Ø mm.	EUWA	Trad.	mm.	mm.	Kg.	Kg.	Bar	Unit				
16090		10	281	335	M22	Ø 26	MZ	175	/	53	5000	8,5	6	Truck Man	325/95R24
16206		10	281	335	M22DS36	B33	BMZ	175	/	53	5000	8,5	6	Truck	12R24

### Ruote Con Cerchi Serie "Semicanale"

Wheels with Semi-drop Center Rims  
6,5H - 16

Disegno Drawing	Valvola Esterna External Valve	Fori Holes	Foro Centr. Pilot Hole	Interasse Fori P.C.D.	Tipo Fori Hole Types	Centraggio Centering	Spont. Int. Inset ET	Spont. Est. Offset HMA	Peso Weight	Indice Di Carico Max Load Rating	Max Pressione ruota Wheel Pressure	Q.tà x pallet Pallet Quantity	Cilenti Customers	Pneumatici Suggestiti Suggested Tires	
Ref. No	No	Ø mm.	Ø mm.	EUWA	Trad.	mm.	mm.	Kg.	Kg.	Bar	Unit				
15261 tubeless		6	130	170	M18	Ø 21	MZ	55	/	26	1850	6,75	20	Bremach Scam	8,25R16
14444 tubeless		6	130	170	M18	Ø 21	MZ	101	110	26	1600	6,75	20	Iveco	9,00R16
15419		6	130	170	M18	Ø 21	MZ	101	110	26	1600	6,75	20	Iveco	255/100R16

### Ruote Con Cerchi Serie "Semicanale"

Wheels with Semi-drop Center Rims  
20 - 11 SDC

Disegno Drawing	Valvola Esterna External Valve	Fori Holes	Foro Centr. Pilot Hole	Interasse Fori P.C.D.	Tipo Fori Hole Types	Centraggio Centering	Spont. Int. Inset ET	Spont. Est. Offset HMA	Peso Weight	Indice Di Carico Max Load Rating	Max Pressione ruota Wheel Pressure	Q.tà x pallet Pallet Quantity	Cilenti Customers	Pneumatici Suggestiti Suggested Tires	
Ref. No	No	Ø mm.	Ø mm.	EUWA	Trad.	mm.	mm.	Kg.	Kg.	Bar	Unit				
15510		8	221	275	M20	Ø 24	MZ	100	/	51	3250	6,25	12	Iveco	
15462 tubeless		8	221	275	M20	Ø 24	MZ	100	/	51	3550	6,25	12	Iveco	365/80R20MPT
15185		8	221	275	M20	Ø 24	MZ	120	/	51	3550	6,25	12	Man	335/80R20MPT
15956 tubeless		8	221	275	M20	Ø 24	MZ	120	/	53,5	3550	6,25	12	Man	

### Ruote Con Cerchi Serie "Base Piatta"

Wheels with Flat Base Rims  
20 - 10,00W

Disegno Drawing	Valvola Esterna External Valve	Fori Holes	Foro Centr. Pilot Hole	Interasse Fori P.C.D.	Tipo Fori Hole Types	Centraggio Centering	Spost. Int. Inset ET	Spost. Est. Offset HMA	Peso Weight	Indice Di Carico Max Load Rating	Max Pressione ruota Wheel Pressure	Q.tà x pallet Pallet Quantity	Clienti Customers	Pneumatici Suggestiti Suggested Tires	
Ref. No		No	Ø mm.	Ø mm.	EUWA	Trad.	mm.	mm.	Kg.	Kg.	Bar	Unit			
16122		10	281	335	M22	Ø 26	MZ	95	/	72	5000	9	18	Iveco	14,00R20 365/80R20 365/85R20 385/95R20
16121 tubeless		10	281	335	M22	Ø 26	MZ	95	/	72	5000	9	18	Iveco	
15682		10	281	335	M22	Ø 26	MZ	114	/	72	4500	9	8	Man	
15684 tubeless		10	281	335	M22	Ø 26	MZ	114	/	72	4500	9	8	Man	
15680 tubeless		10	281	335	M22	Ø 26	MZ	114	/	72	4500	9	8	Man	
15739		10	281	335	M22DS36	B33	BMZ	121	/	72	4500	9	8	Man	

### Ruote Con Cerchi Serie "Base Piatta"

Wheels with 5° Tapered Base Rims  
20 - 7,5

Disegno Drawing	Valvola Esterna External Valve	Fori Holes	Foro Centr. Pilot Hole	Interasse Fori P.C.D.	Tipo Fori Hole Types	Centraggio Centering	Spost. Int. Inset ET	Spost. Est. Offset HMA	Peso Weight	Indice Di Carico Max Load Rating	Max Pressione ruota Wheel Pressure	Q.tà x pallet Pallet Quantity	Clienti Customers	Pneumatici Suggestiti Suggested Tires	
Ref. No		No	Ø mm.	Ø mm.	EUWA	Trad.	mm.	mm.	Kg.	Kg.	Bar	Unit			
16124		10	281	335	M22	Ø 26	MZ	154	166	47	3250	8,25	18	Iveco Truck	9,00R20 10,00R20 11,00R20

### Ruote Con Cerchi Serie "Base Piatta"

Wheels with 5° Tapered Base Rims  
20 - 8,5

Disegno Drawing	Valvola Esterna External Valve	Fori Holes	Foro Centr. Pilot Hole	Interasse Fori P.C.D.	Tipo Fori Hole Types	Centraggio Centering	Spost. Int. Inset ET	Spost. Est. Offset HMA	Peso Weight	Indice Di Carico Max Load Rating	Max Pressione ruota Wheel Pressure	Q.tà x pallet Pallet Quantity	Clienti Customers	Pneumatici Suggestiti Suggested Tires	
Ref. No		No	Ø mm.	Ø mm.	EUWA	Trad.	mm.	mm.	Kg.	Kg.	Bar	Unit			
15990		8	221	275	M22	Ø 26	MZ	108	/	60	3750	8,5	18	Daimler	11,00R20 12,00R20
16112		10	281	335	M22	Ø 26	MZ	161	174	54	3750	8,5	18	Iveco Truck	
16182		10	281	335	M22	Ø 26	MZ	161	174	54	3750	8,5	18	Man	

### Ruote Con Cerchi Serie "Base Piatta"

Wheels with 5° Tapered Base Rims  
24 - 8,5

Disegno Drawing	Valvola Esterna External Valve	Fori Holes	Foro Centr. Pilot Hole	Interasse Fori P.C.D.	Tipo Fori Hole Types	Centraggio Centering	Spost. Int. Inset ET	Spost. Est. Offset HMA	Peso Weight	Indice Di Carico Max Load Rating	Max Pressione ruota Wheel Pressure	Q.tà x pallet Pallet Quantity	Clienti Customers	Pneumatici Suggestiti Suggested Tires	
Ref. No		No	Ø mm.	Ø mm.	EUWA	Trad.	mm.	mm.	Kg.	Kg.	Bar	Unit			
16123		10	281	335	M22	Ø 26	MZ	160	175	70	4750	8,5	6/12	Iveco Truck	12,00R24
16184		10	281	335	M22	Ø 26	MZ	160	175	70	4750	8,5	6/12	Man	
16150		10	281	335	M22	Ø 26	MZ	165	180	70	4750	8,5	6/12	Truck	





+39 02 96121 | [gianettiruote.it](http://gianettiruote.it)

Via Stabilimenti, 31 | 20816 Ceriano Laghetto (MB) Italy  
[customerservice@gianettiruote.it](mailto:customerservice@gianettiruote.it)



(800) 823-8332 | [accuridewheelendsolutions.com](http://accuridewheelendsolutions.com)

7140 Office Circle | Evansville, IN 47715